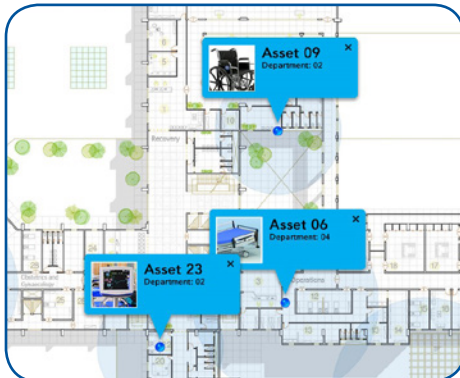
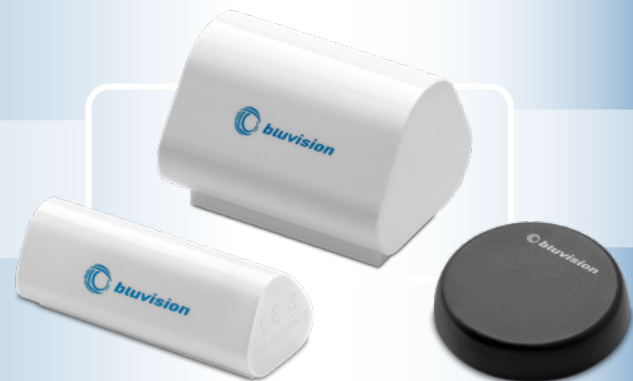


BEEKs™ Asset Beacons



TECHNOLOGY HIGHLIGHTS:

- Bluetooth Smart 4.1 compliant beacons
- iBeacon (Apple), Eddystone (Google) and sBeacon (Bluision) supported simultaneously
- Up to 5 years battery life time
- Location precision down to 6 ft (2 m)
- Central management possible
- Fast and easy roll-out, equipment agnostic

BLE BEACONS FOR ASSET LOCATION SERVICES, WAYFINDING OR RETAIL APPLICATIONS

- **Flexible** – Simultaneously supports iBeacon, Eddystone and sBeacon protocol for optimal application compatibility.
- **Multi-Purpose** – Used as promotional beacons, for way-finding or asset location.
- **Rapid Implementation** – Easy to apply anywhere with multi-year battery life.

BEEKs™ Bluetooth Low-Energy (BLE) beacons are among the most advanced beacons in the industry. Being fully Apple iBeacon and Google Eddystone compatible, BEEKs beacons may be used for any standard beacon application that provides location based promotional or way-finding services to smartphone users.

When combined with HID Global's end-to-end IoT ecosystem, that includes BluFi™ BLE to WiFi gateways and the Bluzone™ cloud services, BEEKs can be centrally managed through the cloud to transfer new messages, firmware updates and battery status checks remotely. Their unique design allows BEEKs to broadcast reliably even in densely populated WiFi environments.

BEEKs asset beacons are primarily meant for real time location (RTLS) of assets via Bluzone Cloud or retail- / way-finding applications. Software development kits (SDK) for iPhone or Android allow building Smartphone APPs that react on beacon presence e.g. to show location or route on a map.

The tamper evident BEEKs Mini is ideal for asset tracking, since it will detect when it is removed from its (metallic) underground and send an alert.

HID Global Location Services, enabled by Bluision, is an efficient real-time asset location (RTLS) platform leveraging BEEKs beacons to effectively pin down the locations of assets inside a warehouse, campus or manufacturing hall.

BEEKs beacons are available in multiple form factors and sensor configurations for different applications like in form of badges for Workplace optimization or with sensors for condition monitoring of motorized equipment. Their extensible architecture allows organizations to scale deployment of standard beacon applications and extend to centralized management, real-time condition monitoring or location services in a later phase.

APPLICATION AREAS:
Real-time location for assets (requires Bluzone™ cloud)

- Indoor position tracking of assets (Tools, portable equipment, vehicles)
- Position based alerting, heat-maps etc.




Way-Finding Applications

- BEEKs Beacons may be installed in well-known places in buildings, campuses or tunnels
- Specifically designed mobile device APPs can detect the beacons for real-time indoor positioning of the phone
- Can support location and way-finding

Retail advertisement

- BEEKs beacons may be used in iBeacon and/or Eddystone mode for advertising messages or location based services
- Quick and efficient counting of people at mustering points in emergency situations
- Central provisioning or monitoring via BluFi and Bluzone optionally possible

SPECIFICATIONS

	BEEKs™		
	Lite	Plus	Mini
			
Base Model Number	BVBLN5W	BVPL09W	BVBMN3B BVBMN3BT (Tamper-proof)
ELECTRONIC			
Bluetooth communication	Bluetooth Low Energy 4.1, 2.4 GHz ISM		
BLE Protocols	Eddystone, iBeacon, sBeacon		
Sensitivity	-97dBm		
Transmission power	-40dBm to +5dBm (-3 m to -150 m line of sight range)		
Processor type	ARM Cortex M3 and M0		
Data rates	1Mbit/s / 2Mbit/s		
Memory	55KB Flash		
Sensors	Motion		
PHYSICAL			
Length x Width	2.36 in x 0.83 x 0.98 in (60 x 21 x 25 mm)	2.41 x 1.46 in (61.3 x 37.2 mm)	1.3 in x 0.3 in (34.2 x 8.35 mm)
Mounting Method	3M VHB adhesive sticker		
Housing Material	Polycarbonate and ABS		
Color	White		Black
Weight	1 oz (28 g)	2.7 oz (76 g)	0.24 oz (7 g)
BATTERY			
Type	3.6V / 2600 mAh	3.6V / 7200 mAh	CR-2032 - 3V
Lifetime (depending on utilization)	up to 5 years	Up to 8 years	Up to 2 years
CHEMICAL AND MECHANICAL RESISTANCE			
Water	IP67, 68° F (20° C), 3.3 ft (1 m) x 1 h		
Withstands Exposure To	Water and UV resistant		
THERMAL			
Storage	-22° to +170° F (-30° to +77° C)		
Operating Temperature	-22° to +170° F (-30° to +77° C)		
OTHER			
Standards	FCC / CE / JRF / IC; BLE	FCC / CE; BLE	
Options	Sensors: Temperature, Light, 3 Axis Accelerometer, Magnetometer (See BEEKs Industrial)		Sensors: Temperature, 3 Axis Accelerometer, Magnetometer (tamper function)
Box Size	10 pcs.		
Warranty	2 years		

